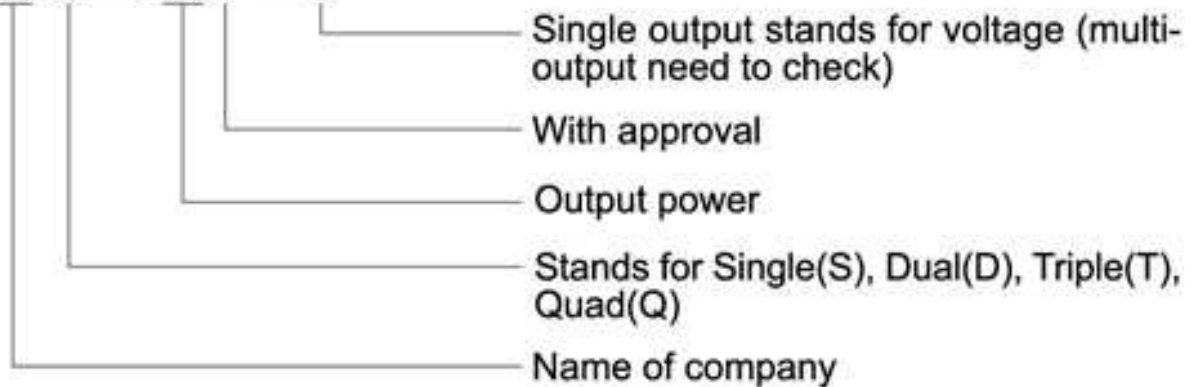


## Nomenclatura para pedidos:

### Model Configuration

AC-DC Single output

**HTS - 25F - 5**



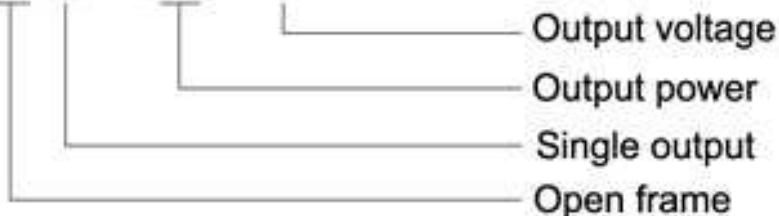
DC-DC Single output

**HT - 25 - 12 - 5**



Open frame power supply

**OFS - 25 - 5**



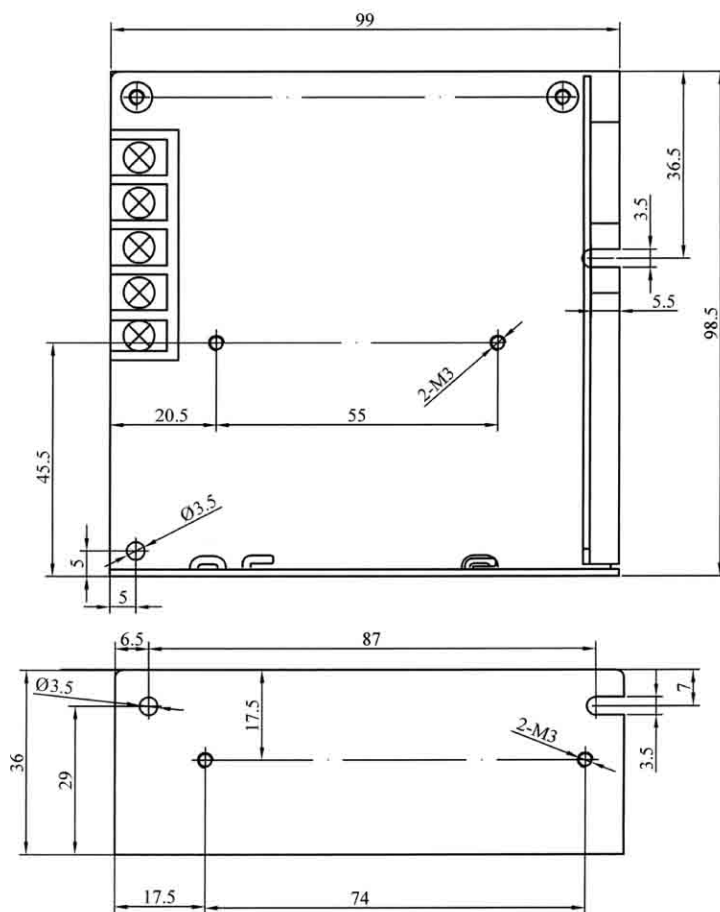
## 15W Single Output Switching Power Supply

- AC Input Range Selectable By Switch
- Low Cost, High Reliability
- Low Power Consumption
- Built-In EMI Filter
- Protections: Over Load/ Short Circuit
- 100% Full Load High Temperature Burn-in Test
- 1 Years Warranty



Input Voltage Range	85~132VAC/ 170~264VAC Selectable By Switch
Input Frequency	47-63Hz
Inrush Current	Cold Start, 15A/ 115VAC, 25A/ 230VAC
Output Adjustment Range	± 10% Rated Output Voltage
Line Regulation	≤0.5%
Output Over Load Protection	105%~150% Fold Back Current Limiting, Auto-recovery
Output Short Circuit Protection	Fold Back Current Limiting, Auto-recovery
Rise, Hold Up Time	100mS, 20mS at Full Load (Typical)
Hi-pot Isolation	I/P-O/P, I/P-FG: 1.5KVAC, O/P-FG: 0.5KVAC
Operating Temperature Range	0°C to +50°C @100%, -10°C @80%, +60°C @60% Load
Storage Temperature Range	-40°C to +85°C, 0 to 95%RH (Non-Condensing)
Safety Standards	Design Refer To UL1012
EMC standards	Design Refer To FCC Part 15 J
Cooling Method	Free Air Cooling Convection
Weight	0.31Kgs/pcs

Product model	DC output	Load regul.	R&N	Efficiency
HTS-15-3.3	3.3V, 0~3A	1%	50mV	60%
HTS-15-5	5V, 0~3A	1%	50mV	65%
HTS-15-7.5	7.5V, 0~2A	1%	50mV	66%
HTS-15-9	9V, 0~1.7A	1%	50mV	67%
HTS-15-12	12V, 0~1.3A	0.5%	50mV	68%
HTS-15-13.5	13.5V, 0~1.1A	0.5%	50mV	69%
HTS-15-15	15V, 0~1A	0.5%	75mV	70%
HTS-15-24	24V, 0~0.7A	0.5%	100mV	72%
HTS-15-48	48V, 0~0.3A	0.5%	150mV	73%



### notes:

1. All dimensions in mm.

2. Tolerance (except cable length): xx = ±0.04

xxx = ±0.010

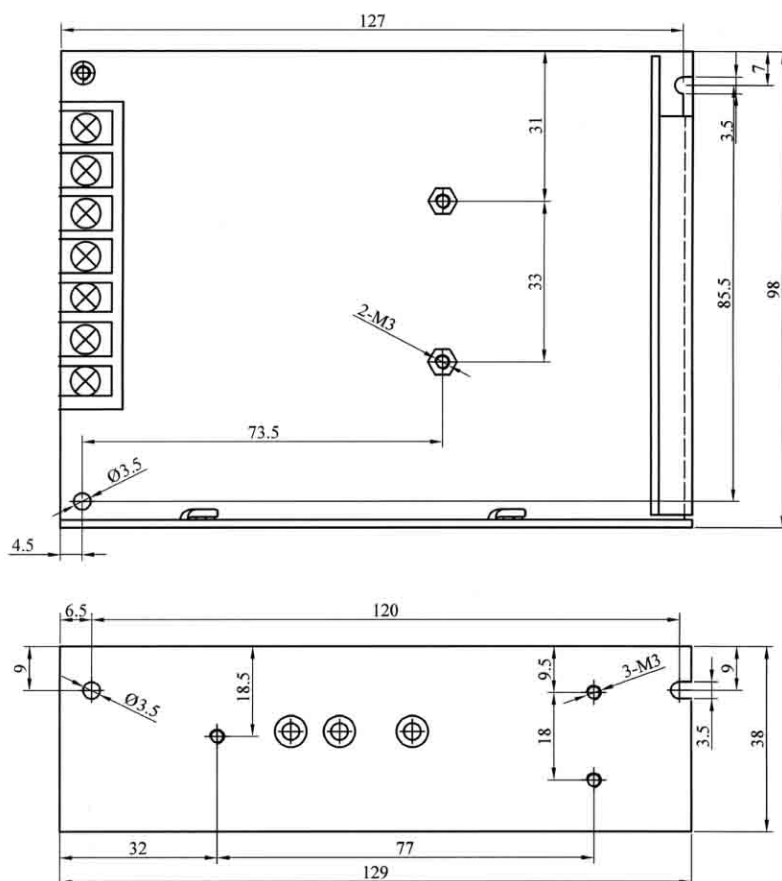
## 35W Single Output Switching Power Supply

- AC Input Range Selectable By Switch
- Low Cost, High Reliability
- Low Power Consumption
- Built-In EMI Filter
- Protections: Over Load/ Short Circuit
- 100% Full Load High Temperature Burn-in Test
- 1 Years Warranty



Input Voltage Range	85~132VAC/ 170~264VAC Selectable By Switch
Input Frequency	47-63Hz
Inrush Current	Cold Start, 15A/ 115VAC, 25A/ 230VAC
Output Adjustment Range	±10% Rated Output Voltage
Line Regulation	≤0.5%
Output Over Load Protection	105%~150% Fold Back Current Limiting, Auto-recovery
Output Short Circuit Protection	Fold Back Current Limiting, Auto-recovery
Rise, Hold Up Time	100mS, 20mS at Full Load (Typical)
Hi-pot Isolation	I/P-O/P, I/P-FG: 1.5KVAC, O/P-FG: 0.5KVAC
Operating Temperature Range	0℃ to +50℃@100%, -10℃@80%, +60℃@60% Load
Storage Temperature Range	-40℃ to +85℃, 0 to 95%RH (Non-Condensing)
Safety Standards	Design Refer To UL1012
EMC standards	Design Refer To FCC Part 15 J
Cooling Method	Free Air Cooling Convection
Weight	0.41Kgs/pcs

Product model	DC output	Load regul.	R&N	Efficiency
HTS-35-3.3	3.3V, 0~7A	1%	50mV	63%
HTS-35-5	5V, 0~7A	1%	50mV	70%
HTS-35-7.5	7.5V, 0~4.7A	1%	75mV	72%
HTS-35-9	9V, 0~4A	1%	90mV	74%
HTS-35-12	12V, 0~3A	0.5%	100mV	76%
HTS-35-13.5	13.5V, 0~2.6A	0.5%	100mV	77%
HTS-35-15	15V, 0~2.4A	0.5%	100mV	78%
HTS-35-24	24V, 0~1.5A	0.5%	100mV	78%
HTS-35-48	48V, 0~0.7A	0.5%	150mV	79%



### notes:

1. All dimensions in mm.

2. Tolerance (except cable length): xx = ±0.04

xxx = ±0.010

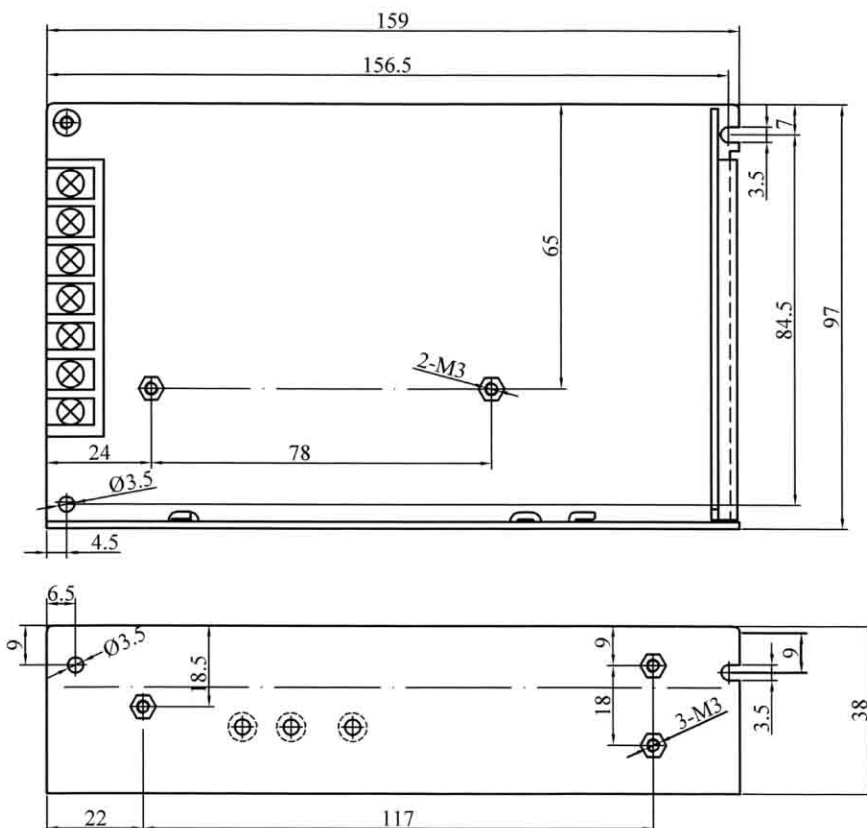
## 50W Single Output Switching Power Supply

- AC Input Range Selectable By Switch
- Low Cost, High Reliability
- Low Power Consumption
- Built-In EMI Filter
- Protections: Over Load/ Short Circuit
- 100% Full Load High Temperature Burn-in Test
- 1 Years Warranty



Input Voltage Range	85~132VAC/ 170~264VAC Selectable By Switch
Input Frequency	47-63Hz
Inrush Current	Cold Start, 15A/ 115VAC, 25A/ 230VAC
Output Adjustment Range	±10% Rated Output Voltage
Line Regulation	≤0.5%
Output Over Load Protection	105%~150% Fold Back Current Limiting, Auto-recovery
Output Short Circuit Protection	Fold Back Current Limiting, Auto-recovery
Rise, Hold Up Time	100mS, 20mS at Full Load (Typical)
Hi-pot Isolation	I/P-O/P, I/P-FG: 1.5KVAC, O/P-FG: 0.5KVAC
Operating Temperature Range	0°C to +50°C @100%, -10°C @80%, +60°C @60% Load
Storage Temperature Range	-40°C to +85°C, 0 to 95%RH (Non-Condensing)
Safety Standards	Design Refer To UL1012
EMC standards	Design Refer To FCC Part 15 J
Cooling Method	Free Air Cooling Convection
Weight	0.51Kgs/pcs

Product model	DC output	Load regul.	R&N	Efficiency
HTS-50-3.3	3.3V, 0~10A	1%	50mV	64%
HTS-50-5	5V, 0~10A	1%	50mV	71%
HTS-50-7.5	7.5V, 0~6.7A	1%	75mV	73%
HTS-50-9	9V, 0~5.6A	1%	90mV	76%
HTS-50-12	12V, 0~4.2A	0.5%	100mV	78%
HTS-50-13.5	13.5V, 0~3.7A	0.5%	100mV	78%
HTS-50-15	15V, 0~3.4A	0.5%	100mV	79%
HTS-50-24	24V, 0~2.1A	0.5%	100mV	82%
HTS-50-48	48V, 0~1A	0.5%	150mV	82%



### notes:

1. All dimensions in mm.

2. Tolerance (except cable length:): xx = ±0.04

xxx = ±0.010



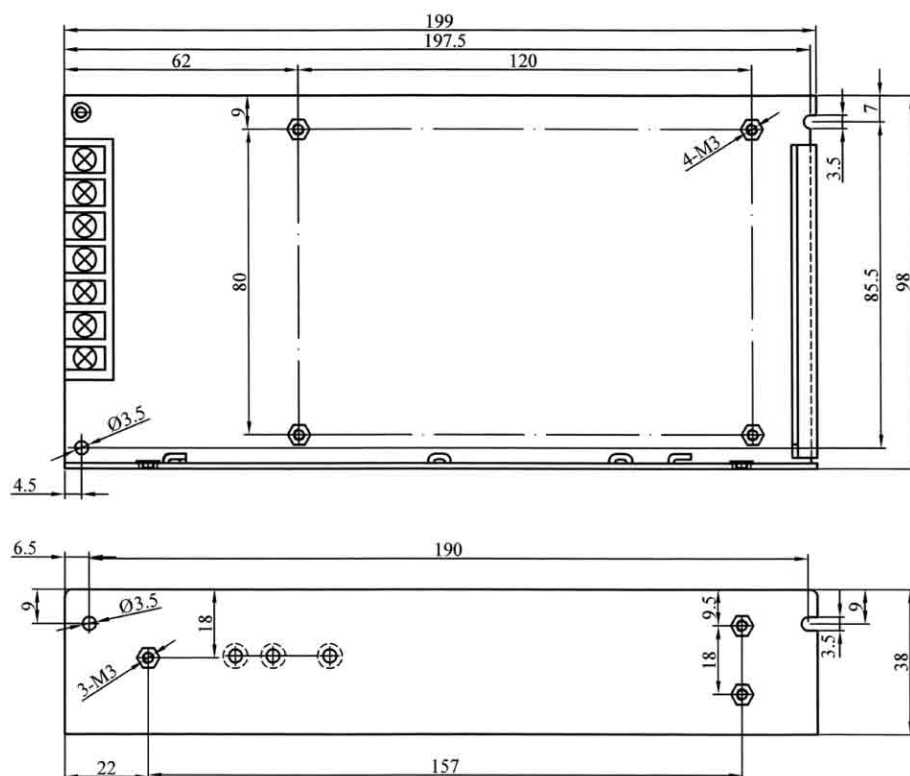
## 100W Single Output Switching Power Supply

- AC Input Range Selectable By Switch
- Low Cost, High Reliability
- Low Power Consumption
- Built-In EMI Filter
- Protections: Over Load/ Short Circuit
- 100% Full Load High Temperature Burn-in Test
- 1 Years Warranty



Input Voltage Range	85~132VAC/ 180~264VAC Selectable By Switch
Input Frequency	47-63Hz
Inrush Current	Cold Start, 25A/ 115VAC, 50A/ 230VAC
Output Adjustment Range	±10% Rated Output Voltage
Line Regulation	≤0.5%
Output Over Load Protection	105%~150% Shut Off, AC Recycle To Re-Start
Output Short Circuit Protection	Shut Off, AC Recycle To Re-Start
Rise, Hold Up Time	80mS, 20mS at Full Load (Typical)
Hi-pot Isolation	I/P-O/P, I/P-FG: 1.5KVAC, O/P-FG: 0.5KVAC
Operating Temperature Range	0℃ to +50℃@100%, -10℃@80%, +60℃@60% Load
Storage Temperature Range	-40℃ to +85℃, 0 to 95%RH (Non-Condensing)
Safety Standards	Design Refer To UL1012
EMC standards	Design Refer To FCC Part 15 J
Cooling Method	Free Air Cooling Convection
Weight	0.62Kgs/pcs

Product model	DC output	Load regul.	R&N	Efficiency
HTS-100-3.3	3.3V, 0~20A	1%	75mV	71%
HTS-100-5	5V, 0~20A	1%	75mV	79%
HTS-100-7.5	7.5V, 0~13.6A	1%	75mV	81%
HTS-100-9	9V, 0~11A	1%	90mV	81%
HTS-100-12	12V, 0~8.5A	0.5%	100mV	82%
HTS-100-13.5	13.5V, 0~7.4A	0.5%	100mV	82%
HTS-100-15	15V, 0~6.7A	0.5%	100mV	82%
HTS-100-24	24V, 0~4.5A	0.5%	100mV	85%
HTS-100-27	27V, 0~3.7A	0.5%	100mV	85%
HTS-100-48	48V, 0~2A	0.5%	100mV	85%



### notes:

1. All dimensions in mm.

2. Tolerance (except cable length): xx = ±0.04

xxx = ±0.010

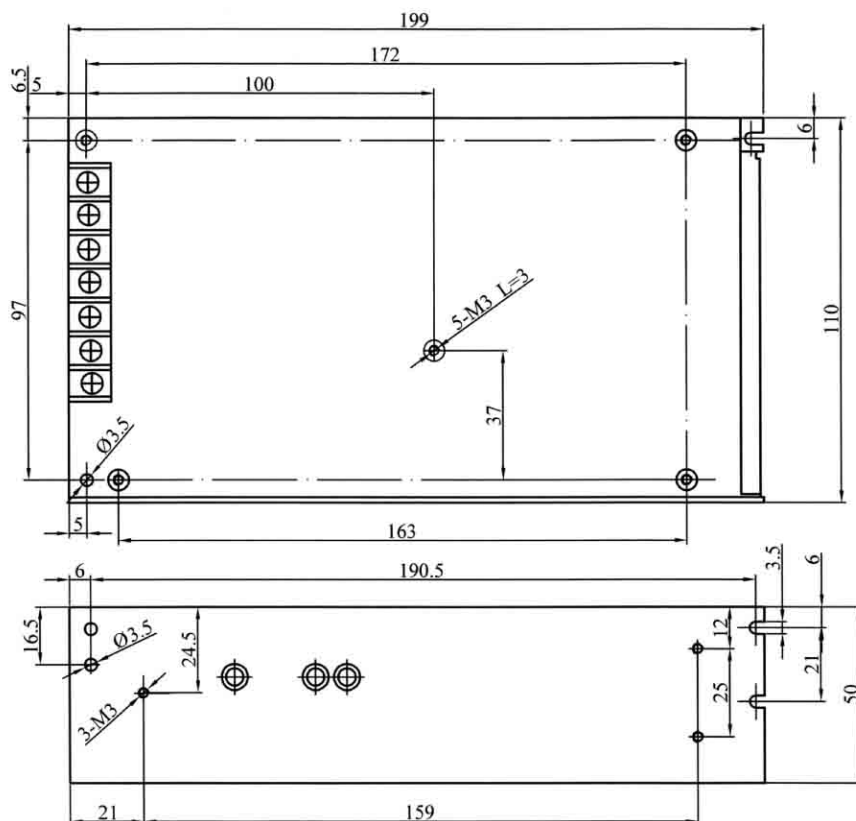
## 150W Single Output Switching Power Supply

- AC Input Range Selectable By Switch
- Low Cost, High Reliability
- Low Power Consumption
- Built-In EMI Filter
- Protections: Over Load/ Short Circuit
- 100% Full Load High Temperature Burn-in Test
- 1 Years Warranty



Input Voltage Range	88~132VAC/ 176~264VAC Selectable By Switch
Input Frequency	47-63Hz
Inrush Current	Cold Start, 30A/ 115VAC, 50A/ 230VAC
Output Adjustment Range	±10% Rated Output Voltage
Line Regulation	≤0.5%
Output Over Load Protection	105%~150% Shut Off, AC Recycle To Re-Start
Output Short Circuit Protection	Shut Off, AC Recycle To Re-Start
Rise, Hold Up Time	50ms, 20ms at Full Load (Typical)
Hi-pot Isolation	I/P-O/P, I/P-FG: 1.5KVAC, O/P-FG: 0.5KVAC
Operating Temperature Range	0°C to +50°C @100%, -10°C @80%, +60°C @60% Load
Storage Temperature Range	-40°C to +85°C, 0 to 95%RH (Non-Condensing)
Safety Standards	Design Refer To UL1012
EMC standards	Design Refer To FCC Part 15 J
Cooling Method	Free Air Cooling Convection
Weight	0.7Kgs/pcs

Product model	DC output	Load regul.	R&N	Efficiency
HTS-150-3.3	3.3V, 0~30A	1%	75mV	72%
HTS-150-5	5V, 0~30A	1%	75mV	78%
HTS-150-7.5	7.5V, 0~20A	1%	75mV	80%
HTS-150-9	9V, 0~16.7A	1%	90mV	81%
HTS-150-12	12V, 0~12.5A	0.5%	100mV	82%
HTS-150-13.5	13.5V, 0~11A	0.5%	100mV	83%
HTS-150-15	15V, 0~10A	0.5%	100mV	84%
HTS-150-24	24V, 0~6.5A	0.5%	150mV	85%
HTS-150-27	27V, 0~5.6A	0.5%	150mV	85%
HTS-150-48	48V, 0~3.2A	0.5%	150mV	86%



### notes:

1. All dimensions in mm.

2. Tolerance (except cable length): xx = ±0.04

xxx = ±0.010

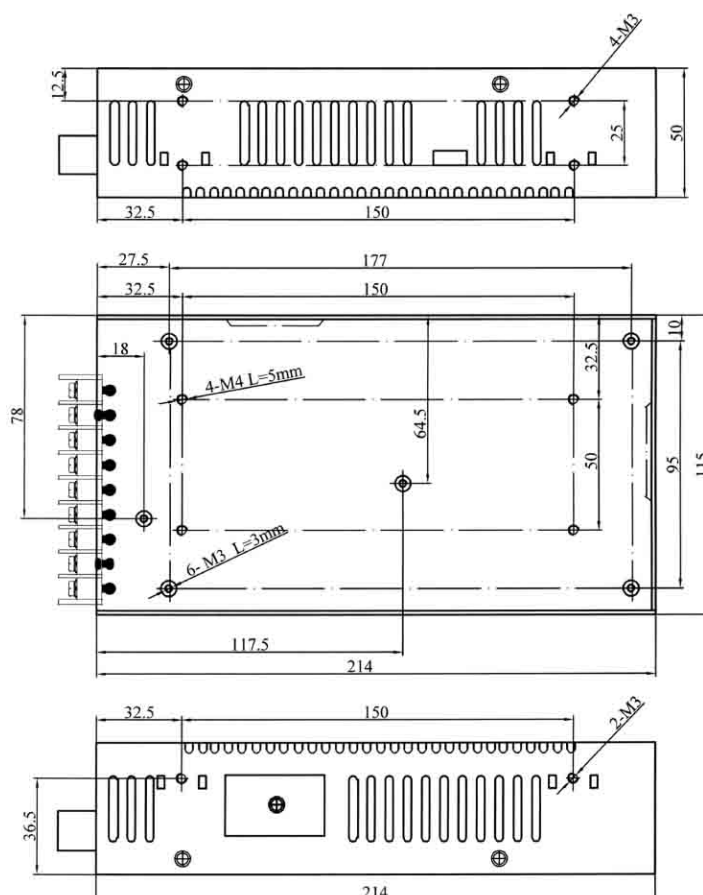
## 200W Single Output Switching Power Supply

- AC Input Range Selectable By Switch
- Low Cost, High Reliability
- Low Power Consumption
- Built-In EMI Filter
- Protections: Over Load/ Short Circuit
- 100% Full Load High Temperature Burn-in Test
- 1 Years Warranty



Input Voltage Range	90~132VAC/ 180~264VAC Selectable By Switch
Input Frequency	47-63Hz
Inrush Current	Cold Start, 25A/ 115VAC, 50A/ 230VAC
Output Adjustment Range	±10% Rated Output Voltage
Line Regulation	≤0.5%
Output Over Load Protection	105%~135% Hiccup Mode, Auto-recovery
Output Short Circuit Protection	Hiccup Mode, Auto-recovery
Rise, Hold Up Time	100mS, 20mS at Full Load (Typical)
Hi-pot Isolation	I/P-O/P, I/P-FG: 1.5KVAC, O/P-FG: 0.5KVAC
Operating Temperature Range	0℃ to +50℃@100%, -10℃@80%, +60℃@60% Load
Storage Temperature Range	-40℃ to +85℃, 0 to 95%RH (Non-Condensing)
Safety Standards	Design Refer To UL1012
EMC standards	Design Refer To FCC Part 15 J
Cooling Method	Free Air Cooling Convection
Weight	0.93Kgs/pcs

Product model	DC output	Load regul.	R&N	Efficiency
HTS-200-3.3	3.3V, 0~40A	1%	100mV	69%
HTS-200-5	5V, 0~40A	1%	100mV	75%
HTS-200-7.5	7.5V, 0~26.5A	1%	100mV	80%
HTS-200-9	9V, 0~22.2A	1%	100mV	81%
HTS-200-12	12V, 0~16.5A	0.5%	100mV	81%
HTS-200-13.5	13.5V, 0~14.7A	0.5%	100mV	81%
HTS-200-15	15V, 0~13A	0.5%	150mV	82%
HTS-200-24	24V, 0~8.3A	0.5%	150mV	84%
HTS-200-27	27V, 0~7.4A	0.5%	150mV	84%
HTS-200-48	48V, 0~4.2A	0.5%	200mV	85%



### notes:

1. All dimensions in mm.

2. Tolerance (except cable length): xx = ±0.04

xxx = ±0.010



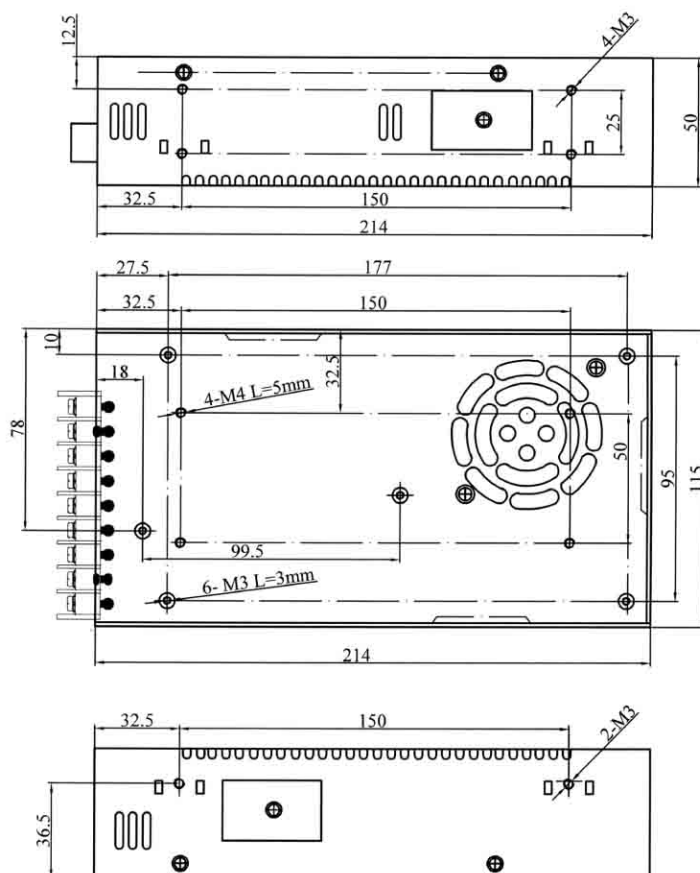
## 350W Single Output Switching Power Supply

- AC Input Range Selectable By Switch
- Low Cost, High Reliability
- Low Power Consumption
- Built-In EMI Filter
- Forced Air Cooling By Built-In DC Fan
- Cooling Fan ON/OFF Auto Control
- Protections: Over Load/ Over Voltage/ Over Temp./ Short Circuit
- 100% Full Load High Temperature Burn-in Test
- 1 Years Warranty



Input Voltage Range	90~132VAC/ 180~264VAC Selectable By Switch
Input Frequency	47-63Hz
Inrush Current	Cold Start, 25A/ 115VAC, 50A/ 230VAC
Output Adjustment Range	±10% Rated Output Voltage
Line Regulation	≤0.5%
Output Over Load Protection	105%~135% Hiccup Mode, Auto-recovery
Output Short Circuit Protection	Hiccup Mode, Auto-recovery
Rise, Hold Up Time	50mS, 20mS at Full Load (Typical)
Hi-pot Isolation	I/P-O/P, I/P-FG: 1.5KVAC, O/P-FG: 0.5KVAC
Operating Temperature Range	0°C to +50°C @100%, -10°C @80%, +60°C @60% Load
Storage Temperature Range	-40°C to +85°C, 0 to 95%RH (Non-Condensing)
Safety Standards	Design Refer To UL1012
EMC standards	Design Refer To FCC Part 15 J
Cooling Method	Forced Air Cooling By Built-In DC Fan Cooling Fan ON/OFF Auto Control
Weight	1.07Kgs/pcs

Product model	DC output	Load regul.	R&N	Efficiency
HTS-350-3.3	3.3V, 0~50A	1%	100mV	69%
HTS-350-5	5V, 0~50A	1%	100mV	74%
HTS-350-7.5	7.5V, 0~40A	1%	100mV	77%
HTS-350-9	9V, 0~36A	1%	100mV	77%
HTS-350-12	12V, 0~29A	0.5%	100mV	75%
HTS-350-13.5	13.5V, 0~25.8A	0.5%	100mV	80%
HTS-350-15	15V, 0~23.2A	0.5%	150mV	79%
HTS-350-24	24V, 0~14.6A	0.5%	150mV	82%
HTS-350-27	27V, 0~13A	0.5%	150mV	83%
HTS-350-48	48V, 0~7.3A	0.5%	200mV	84%



### notes:

1. All dimensions in mm.

2. Tolerance (except cable length): xx = ±0.04

xxx = ±0.010



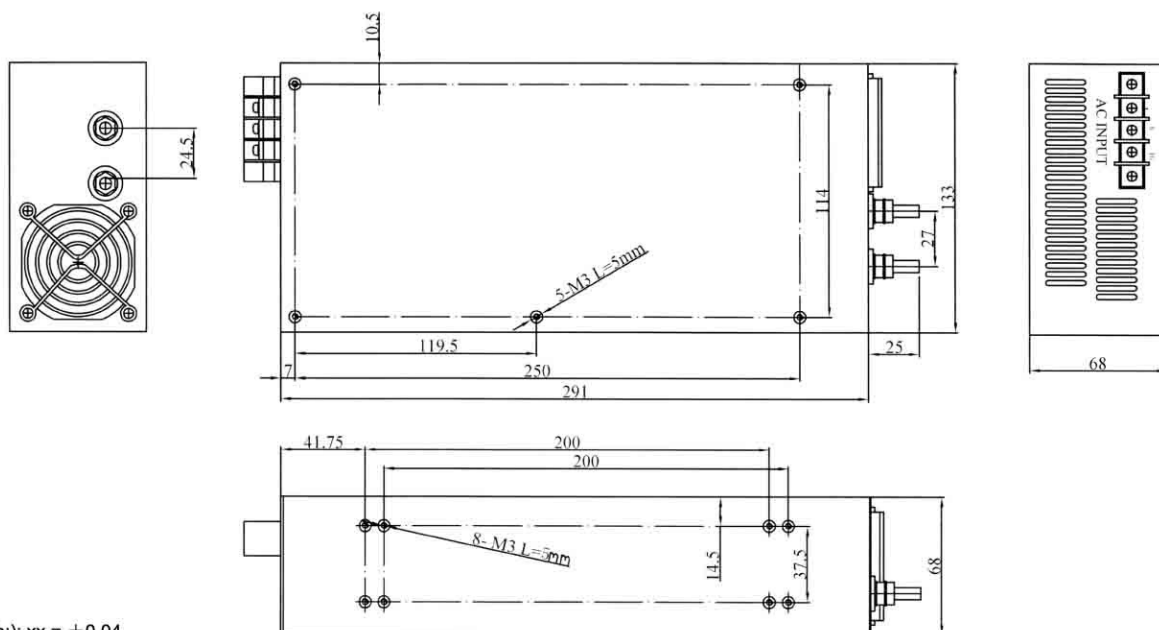
## 600W~800W Single Output With Parallel (N+1) Function

- AC Input Range Selectable By Switch
- Low Power Consumption
- Built-In EMI Filter
- Forced Air Cooling By Built-In DC Fan
- Built-In Remote Sense Function
- Built-In Remote ON/OFF Control
- Built-In Parallel Operation Function
- Can Adjust From 20% to 100% Output Voltage By External Control 1V to 5VDC
- Protections: Over Load/ Over Voltage/ Over Temp./ Short Circuit
- 100% Full Load High Temperature Burn-in Test
- 1 Years Warranty



Input Voltage Range	90~130VAC/ 180~260VAC Selectable By Switch
Input Frequency	47-63Hz
Inrush Current	Cold Start, 60A/ 230VAC
Output Adjustment Range	± 5% Rated Output Voltage By Potential Meter 20% to 100% By External Control 1V to 5VDC
Line Regulation	≤0.5%
Output Over Load Protection	110%~135% Constant Current Limiting, Delay Shutdown
Output Over Voltage Protection	110%~135% Rated Output Voltage
Output Short Circuit Protection	Delay Shutdown
Rise, Hold Up Time	50mS, 20mS at Full Load (Typical)
Hi-pot Isolation	I/P-O/P, I/P-FG: 1.5KVAC, O/P-FG: 0.5KVAC
Operating Temperature Range	-10°C to +50°C @ 100%, -20°C @ 80%, +65°C @ 50% Load
Storage Temperature Range	-40°C to +85°C, 0 to 95%RH (Non-Condensing)
Safety Standards	Design Refer To UL60950-1, EN60950-1
Cooling Method	Forced Air Cooling By Built-In DC Fan
Weight	2.5Kgs/pcs

Product model	DC output	Load regul.	R&N	Efficiency
HTS-600-5	5V, 0~100A	1%	100mV	78%
HTS-600-12	12V, 0~50A	0.5%	120mV	81%
HTS-600-15	15V, 0~40A	0.5%	150mV	82%
HTS-600-24	24V, 0~25A	0.5%	200mV	86%
HTS-600-48	48V, 0~12A	0.5%	400mV	88%
HTS-800-12	12V, 0~66A	1%	120mV	81%
HTS-800-15	15V, 0~54A	0.5%	150mV	82%
HTS-800-24	24V, 0~33A	0.5%	200mV	86%
HTS-800-48	48V, 0~16.6A	0.5%	400mV	87%



### notes:

1. All dimensions in mm.

2. Tolerance (except cable length): xx = ±0.04

xxx = ±0.010

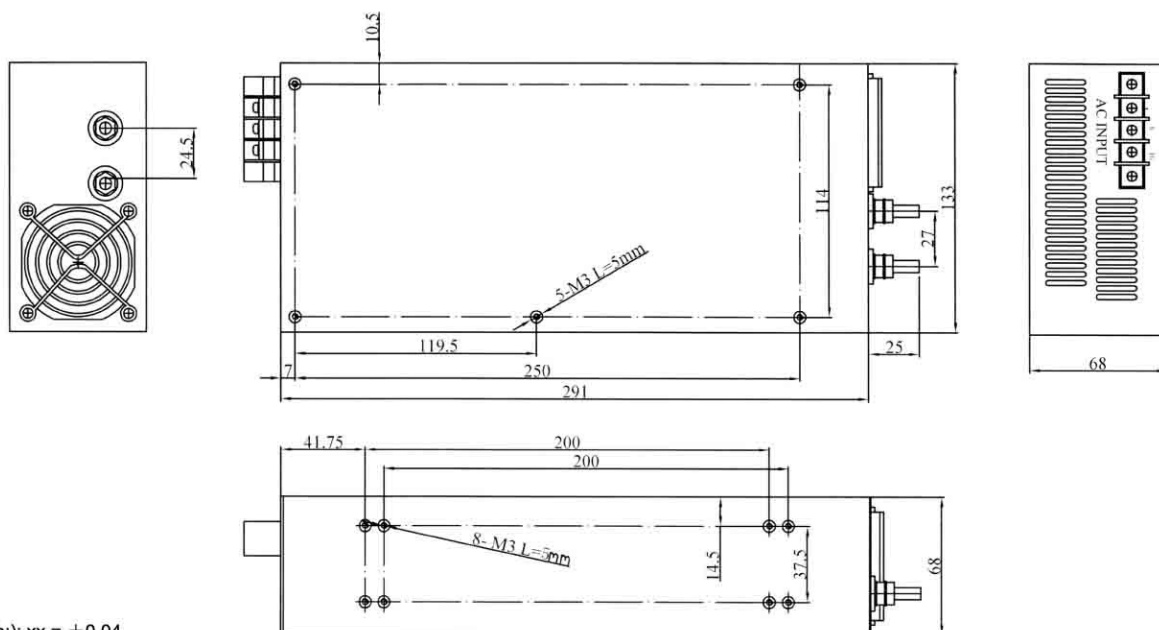
## 600W~800W Single Output With Parallel (N+1) Function

- AC Input Range Selectable By Switch
- Low Power Consumption
- Built-In EMI Filter
- Forced Air Cooling By Built-In DC Fan
- Built-In Remote Sense Function
- Built-In Remote ON/OFF Control
- Built-In Parallel Operation Function
- Can Adjust From 20% to 100% Output Voltage By External Control 1V to 5VDC
- Protections: Over Load/ Over Voltage/ Over Temp./ Short Circuit
- 100% Full Load High Temperature Burn-in Test
- 1 Years Warranty



Input Voltage Range	90~130VAC/ 180~260VAC Selectable By Switch
Input Frequency	47-63Hz
Inrush Current	Cold Start, 60A/ 230VAC
Output Adjustment Range	± 5% Rated Output Voltage By Potential Meter 20% to 100% By External Control 1V to 5VDC
Line Regulation	≤0.5%
Output Over Load Protection	110%~135% Constant Current Limiting, Delay Shutdown
Output Over Voltage Protection	110%~135% Rated Output Voltage
Output Short Circuit Protection	Delay Shutdown
Rise, Hold Up Time	50mS, 20mS at Full Load (Typical)
Hi-pot Isolation	I/P-O/P, I/P-FG: 1.5KVAC, O/P-FG: 0.5KVAC
Operating Temperature Range	-10°C to +50°C @ 100%, -20°C @ 80%, +65°C @ 50% Load
Storage Temperature Range	-40°C to +85°C, 0 to 95%RH (Non-Condensing)
Safety Standards	Design Refer To UL60950-1, EN60950-1
Cooling Method	Forced Air Cooling By Built-In DC Fan
Weight	2.5Kgs/pcs

Product model	DC output	Load regul.	R&N	Efficiency
HTS-600-5	5V, 0~100A	1%	100mV	78%
HTS-600-12	12V, 0~50A	0.5%	120mV	81%
HTS-600-15	15V, 0~40A	0.5%	150mV	82%
HTS-600-24	24V, 0~25A	0.5%	200mV	86%
HTS-600-48	48V, 0~12A	0.5%	400mV	88%
HTS-800-12	12V, 0~66A	1%	120mV	81%
HTS-800-15	15V, 0~54A	0.5%	150mV	82%
HTS-800-24	24V, 0~33A	0.5%	200mV	86%
HTS-800-48	48V, 0~16.6A	0.5%	400mV	87%



### notes:

1. All dimensions in mm.

2. Tolerance (except cable length): xx = ±0.04

xxx = ±0.010

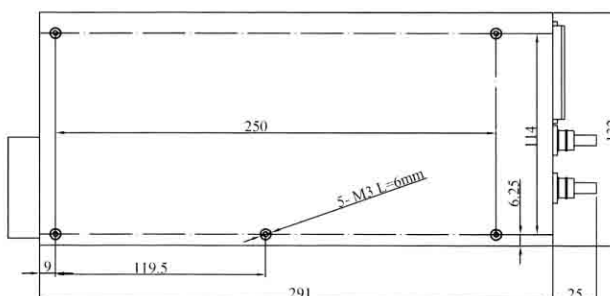
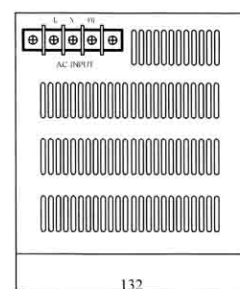
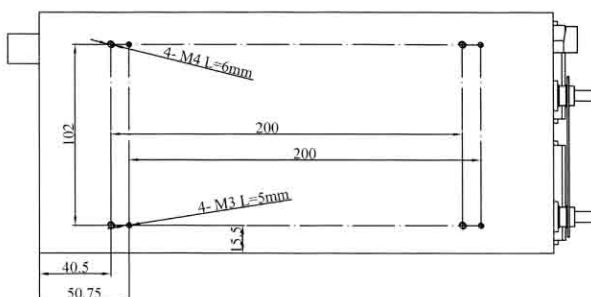
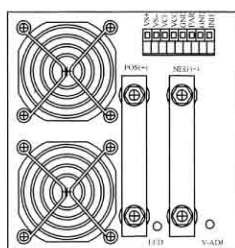
## 1200W Single Output With Parallel (N+1) Function

- Low Power Consumption
- Built-In EMI Filter
- Forced Air Cooling By Built-In DC Fan
- Built-In Remote Sense Function
- Built-In Remote ON/OFF Control
- Built-In Parallel Operation Function
- Can Adjust From 20% to 100% Output Voltage By External Control 1V to 5VDC
- Protections: Over Load/ Over Voltage/ Over Temp./ Short Circuit
- 100% Full Load High Temperature Burn-in Test
- 1 Years Warranty



Input Voltage Range	200~260VAC
Input Frequency	47-63Hz
Inrush Current	Cold Start, 120A/ 230VAC
Output Adjustment Range	±5% Rated Output Voltage By Potential Meter 20% to 100% By External Control 1V to 5VDC
Line Regulation	≤0.5%
Output Over Load Protection	110%~135% Constant Current Limiting, Delay Shutdown
Output Over Voltage Protection	110%~135% Rated Output Voltage
Output Short Circuit Protection	Delay Shutdown
Rise, Hold Up Time	50mS, 20mS at Full Load (Typical)
Hi-pot Isolation	I/P-O/P, I/P-FG: 1.5KVAC, O/P-FG: 0.5KVAC
Operating Temperature Range	-10℃ to +50℃@100%, -20℃@80%, +65℃@50% Load
Storage Temperature Range	-40℃ to +85℃, 0 to 95%RH (Non-Condensing)
Safety Standards	Design Refer To UL60950-1, EN60950-1
Cooling Method	Forced Air Cooling By Built-In DC Fan
Weight	4.75Kgs/pcs

Product model	DC output	Load regul.	R&N	Efficiency
HTS-1200-5	5V, 0~180A	2%	100mV	78%
HTS-1200-12	12V, 0~100A	1%	120mV	84%
HTS-1200-15	15V, 0~80A	0.5%	150mV	86%
HTS-1200-24	24V, 0~50A	0.5%	200mV	86%
HTS-1200-48	48V, 0~24A	0.5%	400mV	88%



### notes:

1. All dimensions in mm.

2. Tolerance (except cable length): xx = ±0.04

xxx = ±0.010



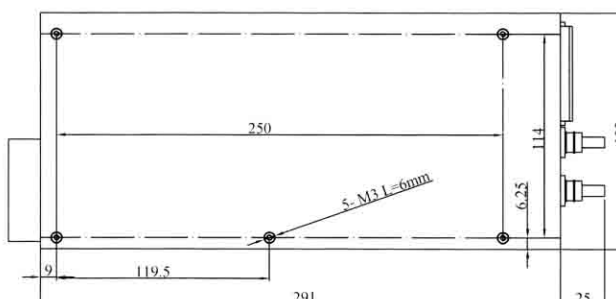
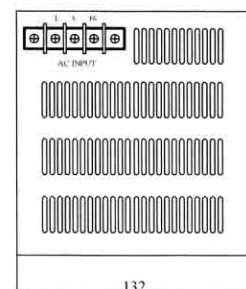
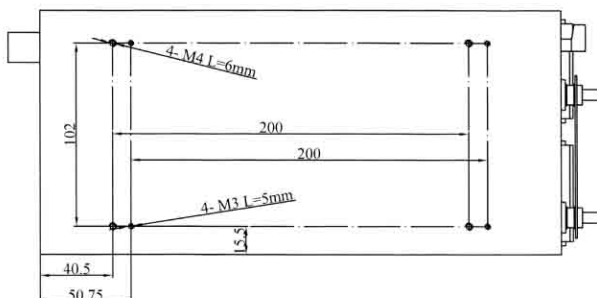
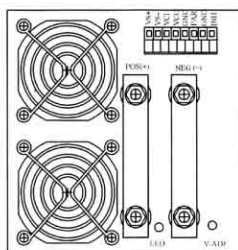
## 1500W Single Output With Parallel (N+1) Function

- Low Power Consumption
- Built-In EMI Filter
- Forced Air Cooling By Built-In DC Fan
- Built-In Remote Sense Function
- Built-In Remote ON/OFF Control
- Built-In Parallel Operation Function
- Can Adjust From 20% to 100% Output Voltage By External Control 1V to 5VDC
- Protections: Over Load/ Over Voltage/ Over Temp./ Short Circuit
- 100% Full Load High Temperature Burn-in Test
- 1 Years Warranty



Input Voltage Range	200~260VAC
Input Frequency	47-63Hz
Inrush Current	Cold Start, 120A/ 230VAC
Output Adjustment Range	±5% Rated Output Voltage By Potential Meter 20% to 100% By External Control 1V to 5VDC
Line Regulation	≤0.5%
Output Over Load Protection	110%~135% Constant Current Limiting, Delay Shutdown
Output Over Voltage Protection	110%~135% Rated Output Voltage
Output Short Circuit Protection	Delay Shutdown
Rise, Hold Up Time	50mS, 20mS at Full Load (Typical)
Hi-pot Isolation	I/P-O/P, I/P-FG: 1.5KVAC, O/P-FG: 0.5KVAC
Operating Temperature Range	-10℃ to +50℃@100%, -20℃@80%, +65℃@50% Load
Storage Temperature Range	-40℃ to +85℃, 0 to 95%RH (Non-Condensing)
Safety Standards	Design Refer To UL60950-1, EN60950-1
Cooling Method	Forced Air Cooling By Built-In DC Fan
Weight	4.75Kgs/pcs

Product model	DC output	Load regul.	R&N	Efficiency
HTS-1500-12	12V, 0~125A	1%	120mV	84%
HTS-1500-15	15V, 0~100A	0.5%	150mV	85%
HTS-1500-24	24V, 0~62.5A	0.5%	200mV	86%
HTS-1500-48	48V, 0~32A	0.5%	400mV	88%



### notes:

1. All dimensions in mm.
2. Tolerance (except cable length:): xx = ±0.04  
xxx = ±0.010

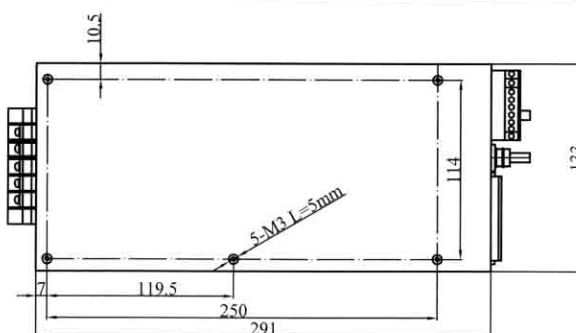
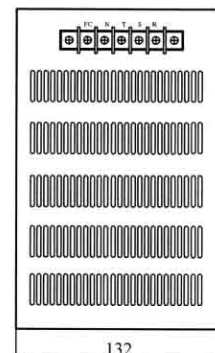
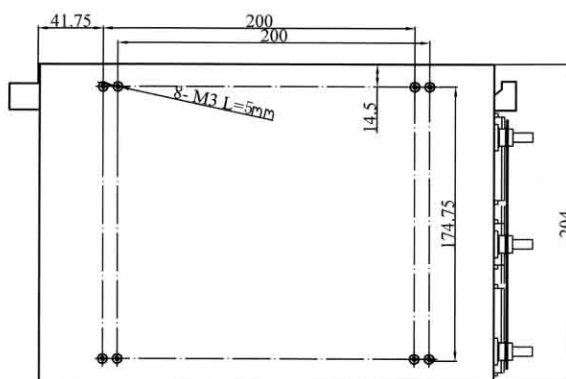
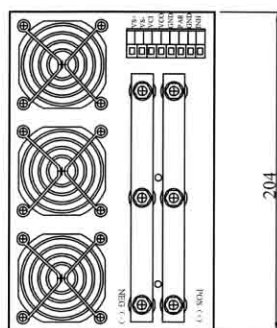
## 2000W Single Output With Parallel (N+1) Function

- Input AC 200~260V, 3  $\phi$  3 Wires
- Low Power Consumption
- Built-In EMI Filter
- Forced Air Cooling By Built-In DC Fan
- Built-In Remote Sense Function
- Built-In Remote ON/OFF Control
- Built-In Parallel Operation Function
- Can Adjust From 20% to 100% Output Voltage By External Control 1V to 5VDC
- Protections: Over Load/ Over Voltage/ Over Temp./ Short Circuit
- 100% Full Load High Temperature Burn-in Test
- 1 Years Warranty



Input Voltage Range	200~260VAC, 3 $\phi$ 3 Wires
Input Frequency	47-63Hz
Inrush Current	Cold Start, 120A/ 230VAC
Output Adjustment Range	$\pm 5\%$ Rated Output Voltage By Potential Meter 20% to 100% By External Control 1V to 5VDC
Line Regulation	$\leq 0.5\%$
Output Over Load Protection	110%~135% Constant Current Limiting, Delay Shutdown
Output Over Voltage Protection	110%~135% Rated Output Voltage
Output Short Circuit Protection	Delay Shutdown
Rise, Hold Up Time	50mS, 20mS at Full Load (Typical)
Hi-pot Isolation	I/P-O/P, I/P-FG: 1.5KVAC, O/P-FG: 0.5KVAC
Operating Temperature Range	-10°C to +50°C@100%, -20°C@80%, +65°C@50% Load
Storage Temperature Range	-40°C to +85°C, 0 to 95%RH (Non-Condensing)
Safety Standards	Design Refer To UL60950-1, EN60950-1
Cooling Method	Forced Air Cooling By Built-In DC Fan
Weight	10Kgs/pcs

Product model	DC output	Load regul.	R&N	Efficiency
HTS-2000-5	5V, 0~250A	2%	120mV	79%
HTS-2000-12	12V, 0~167A	1%	150mV	85%
HTS-2000-15	15V, 0~134A	1%	150mV	85%
HTS-2000-24	24V, 0~83.5A	0.5%	200mV	86%
HTS-2000-48	48V, 0~42A	0.5%	400mV	87%



### notes:

1. All dimensions in mm.

2. Tolerance (except cable length): xx =  $\pm 0.04$

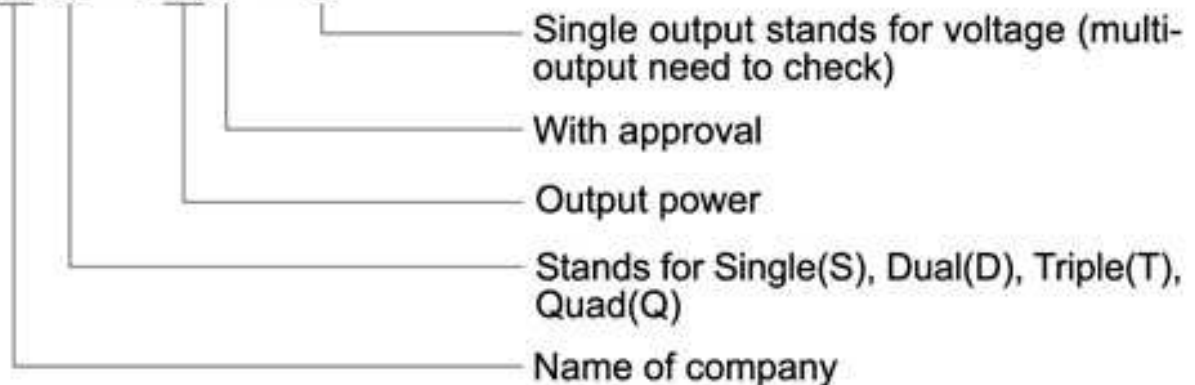
xxx =  $\pm 0.010$

## Nomenclatura para pedidos:

### Model Configuration

AC-DC Single output

**HTS - 25F - 5**



DC-DC Single output

**HT - 25 - 12 - 5**



Open frame power supply

**OFS - 25 - 5**





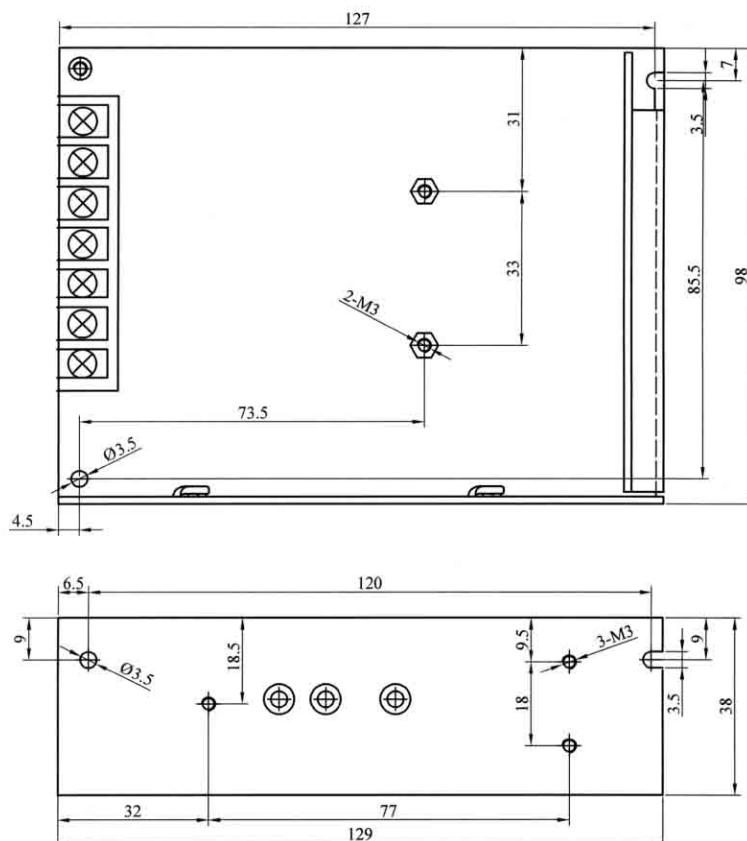
## 30W Dual Output Switching Power Supply

- AC Input Range Selectable By Switch
- Low Cost, High Reliability
- Low Power Consumption
- Built-In EMI Filter
- Protections: Over Load/ Short Circuit
- 100% Full Load High Temperature Burn-in Test
- 1 Years Warranty



Input Voltage Range	85~132VAC/ 170~264VAC Selectable By Switch
Input Frequency	47-63Hz
Inrush Current	Cold Start, 18A/ 115VAC, 36A/ 230VAC
Output Adjustment Range	CH1: -5%~+10% Rated Output Voltage
Line Regulation	≤0.5%
Output Over Load Protection	105%~150% Fold Back Current Limiting, Auto-recovery
Output Short Circuit Protection	Fold Back Current Limiting, Auto-recovery
Rise, Hold Up Time	50mS, 30mS at Full Load (Typical)
Hi-pot Isolation	I/P-O/P, I/P-FG: 1.5KVAC, O/P-FG: 0.5KVAC
Operating Temperature Range	0°C to +50°C@100%, -10°C@80%, +60°C@60% Load
Storage Temperature Range	-40°C to +85°C, 0 to 95%RH (Non-Condensing)
Safety Standards	Design Refer To UL1012
EMC standards	Design Refer To FCC Part 15 J
Cooling Method	Free Air Cooling Convection
Weight	0.41Kgs/pcs

Product model	DC output	Load regul.	R&N	Efficiency	Max Output
HTD-30-A	5V, 0.5~4A	1%	50mV	73%	32W
	12V, 0.1~1A	+3%, -7%	100mV		
HTD-30-B	5V, 0.5~4A	1%	50mV	75%	35W
	24V, 0.1~1A	+3%, -5%	100mV		



### notes:

1. All dimensions in mm.

2. Tolerance (except cable length): xx = ±0.04

xxx = ±0.010

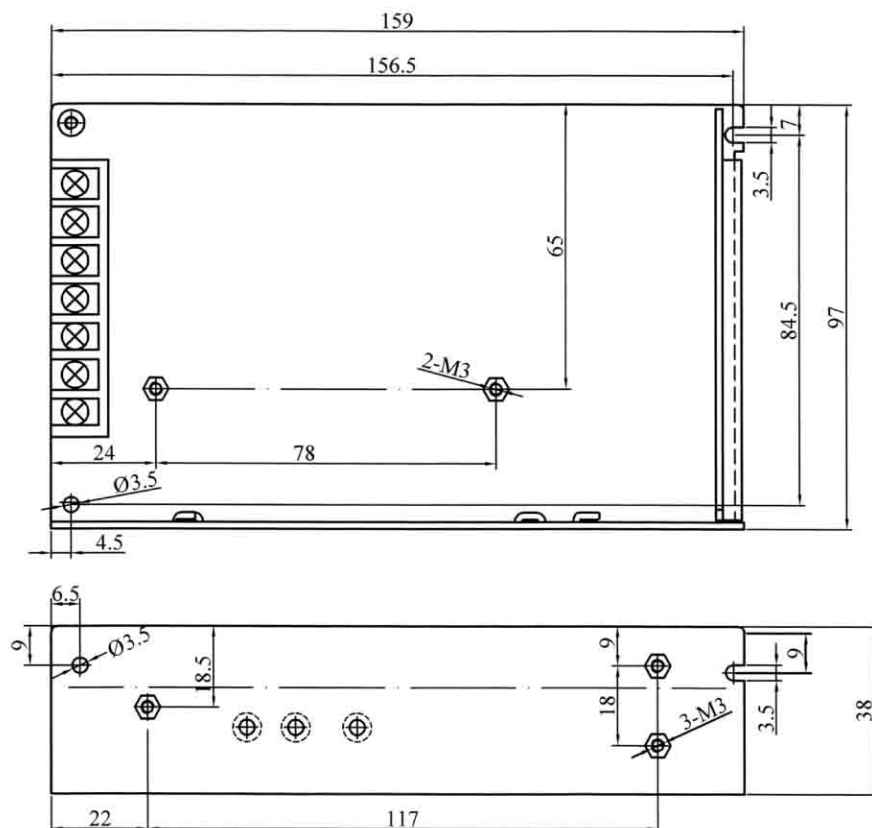
## 50W Dual Output Switching Power Supply

- AC Input Range Selectable By Switch
- Low Cost, High Reliability
- Low Power Consumption
- Built-In EMI Filter
- Protections: Over Load/ Short Circuit
- 100% Full Load High Temperature Burn-in Test
- 1 Years Warranty



Input Voltage Range	85~132VAC/ 170~264VAC Selectable By Switch
Input Frequency	47-63Hz
Inrush Current	Cold Start, 18A/ 115VAC, 36A/ 230VAC
Output Adjustment Range	CH1: -5%~+10% Rated Output Voltage
Line Regulation	≤0.5%
Output Over Load Protection	105%~150% Fold Back Current Limiting, Auto-recovery
Output Short Circuit Protection	Fold Back Current Limiting, Auto-recovery
Rise, Hold Up Time	100mS, 20mS at Full Load (Typical)
Hi-pot Isolation	I/P-O/P, I/P-FG: 1.5KVAC, O/P-FG: 0.5KVAC
Operating Temperature Range	0°C to +50°C@100%, -10°C@80%, +60°C@60% Load
Storage Temperature Range	-40°C to +85°C, 0 to 95%RH (Non-Condensing)
Safety Standards	Design Refer To UL1012
EMC standards	Design Refer To FCC Part 15 J
Cooling Method	Free Air Cooling Convection
Weight	0.53Kgs/pcs

Product model	DC output	Load regul.	R&N	Efficiency	Max Output
HTD-50-A	5V, 1~6A	1%	50mV	74%	54W
	12V, 0.3~2A	+5%, -8%	100mV		
HTD-50-B	5V, 1~6A	1%	50mV	74%	54W
	24V, 0.2~1A	8%	100mV		



### notes:

1. All dimensions in mm.

2. Tolerance (except cable length:): xx = ±0.04

xxx = ±0.010

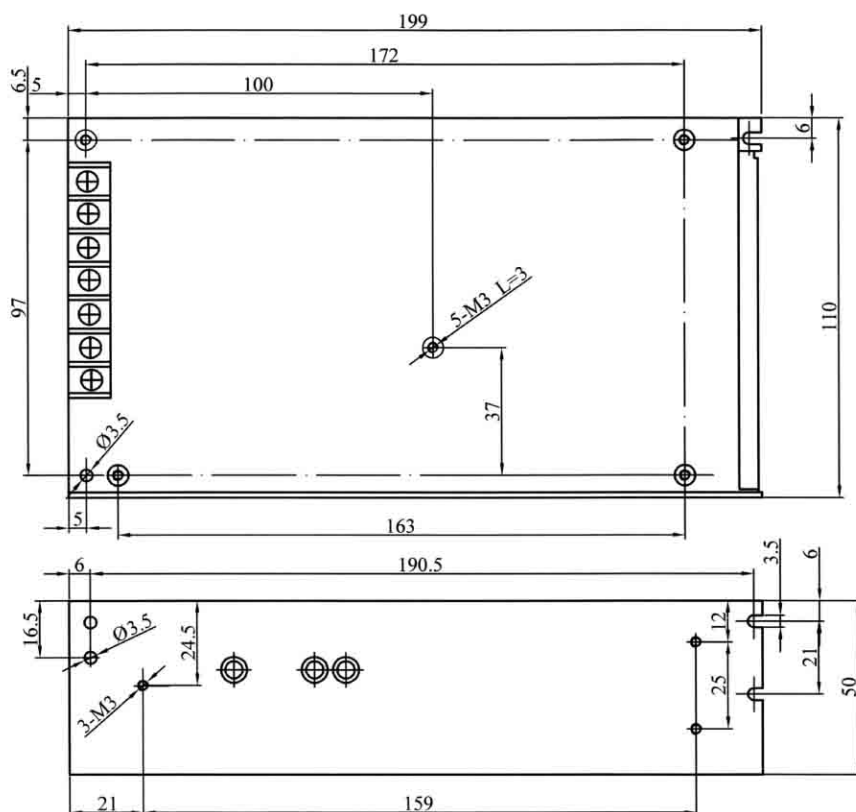
## 120W Dual Output Switching Power Supply

- AC Input Range Selectable By Switch
- Low Cost, High Reliability
- Low Power Consumption
- Built-In EMI Filter
- Protections: Over Load/ Short Circuit
- 100% Full Load High Temperature Burn-in Test
- 1 Years Warranty



Input Voltage Range	88~132VAC/ 176~264VAC Selectable By Switch
Input Frequency	47-63Hz
Inrush Current	Cold Start, 30A/ 115VAC, 50A/ 230VAC
Output Adjustment Range	CH1: -5%~+10% Rated Output Voltage
Line Regulation	≤0.5%
Output Over Load Protection	105%~135% Shut Off, AC recycle To Re-Start
Output Short Circuit Protection	Shut Off, AC recycle To Re-Start
Rise, Hold Up Time	50mS, 20mS at Full Load (Typical)
Hi-pot Isolation	I/P-O/P, I/P-FG: 1.5KVAC, O/P-FG: 0.5KVAC
Operating Temperature Range	0°C to +50°C@100%, -10°C@80%, +60°C@60% Load
Storage Temperature Range	-40°C to +85°C, 0 to 95%RH (Non-Condensing)
Safety Standards	Design Refer To UL1012
EMC standards	Design Refer To FCC Part 15 J
Cooling Method	Free Air Cooling Convection
Weight	0.81Kgs/pcs

Product model	DC output	Load regul.	R&N	Efficiency	Max Output
HTD-120-A	5V, 2~12A	1%	75mV	77%	120W
	12V, 0.5~5A	6%	100mV		
HTD-120-B	5V, 2~10A	1%	75mV	79%	126W
	24V, 0.4~4A	7%	150mV		



### notes:

1. All dimensions in mm.

2. Tolerance (except cable length): xx = ±0.04

xxx = ±0.010

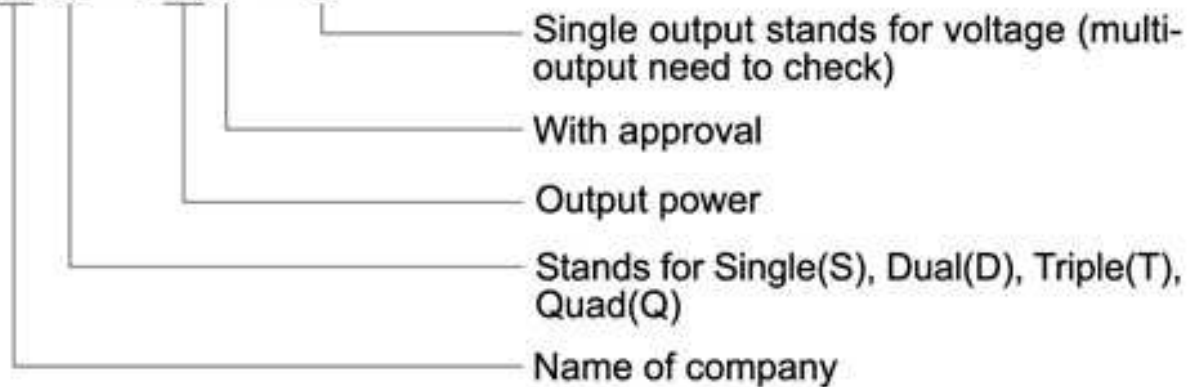


## Nomenclatura para pedidos:

### Model Configuration

AC-DC Single output

**HTS - 25F - 5**



DC-DC Single output

**HT - 25 - 12 - 5**



Open frame power supply

**OFS - 25 - 5**



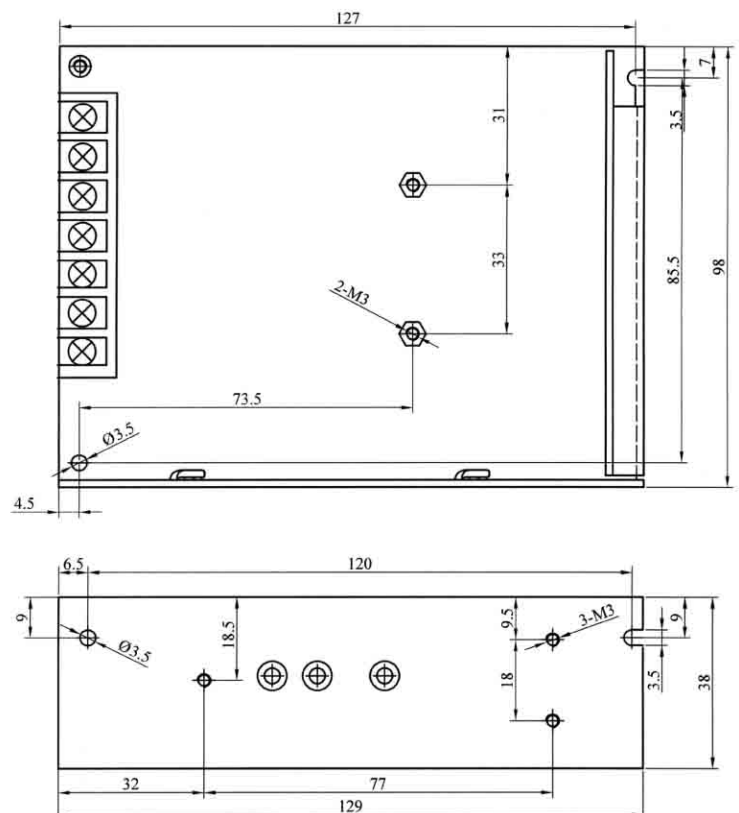
## 30W Triple Output Switching Power Supply

- AC Input Range Selectable By Switch
- Low Cost, High Reliability
- Low Power Consumption
- Built-In EMI Filter
- Protections: Over Load/ Short Circuit
- 100% Full Load High Temperature Burn-in Test
- 1 Years Warranty



Input Voltage Range	85~132VAC/ 170~264VAC Selectable By Switch
Input Frequency	47-63Hz
Inrush Current	Cold Start, 18A/ 115VAC, 36A/ 230VAC
Output Adjustment Range	CH1: -5%~+10% Rated Output Voltage
Line Regulation	≤0.5%
Output Over Load Protection	105%~150% Fold Back Current Limiting, Auto-recovery
Output Short Circuit Protection	Fold Back Current Limiting, Auto-recovery
Rise, Hold Up Time	100mS, 30mS at Full Load (Typical)
Hi-pot Isolation	I/P-O/P, I/P-FG: 1.5KVAC, O/P-FG: 0.5KVAC
Operating Temperature Range	0℃ to +50℃@100%, -10℃@80%, +60℃@60% Load
Storage Temperature Range	-40℃ to +85℃, 0 to 95%RH (Non-Condensing)
Safety Standards	Design Refer To UL1012
EMC standards	Design Refer To FCC Part 15 J
Cooling Method	Free Air Cooling Convection
Weight	0.42Kgs/pcs

Product model	DC output	Load regul.	R&N	Efficiency	Max Output
HTT-30-A	5V, 0.5~3A	1%	50mV	71%	30W
	12V, 0.1~1A	+2%, -6%	100mV		
	-5V, 0.1~0.5A	+2%, -10%	50mV		
HTT-30-B	5V, 0.5~3A	1%	50mV	73%	33W
	12V, 0.1~1A	+2%, -6%	100mV		
	-12V, 0.1~0.5A	6%	100mV		



### notes:

1. All dimensions in mm.
2. Tolerance (except cable length): xx =  $\pm 0.04$   
xxx =  $\pm 0.010$

## 50W Triple Output Switching Power Supply

- AC Input Range Selectable By Switch
- Low Cost, High Reliability
- Low Power Consumption
- Built-In EMI Filter
- Protections: Over Load/ Short Circuit
- 100% Full Load High Temperature Burn-in Test
- 1 Years Warranty



Input Voltage Range	85~132VAC/ 170~264VAC Selectable By Switch
Input Frequency	47-63Hz
Inrush Current	Cold Start, 20A/ 115VAC, 40A/ 230VAC
Output Adjustment Range	CH1: -5%~+10% Rated Output Voltage
Line Regulation	≤0.5%
Output Over Load Protection	105%~150% Fold Back Current Limiting, Auto-recovery
Output Short Circuit Protection	Fold Back Current Limiting, Auto-recovery
Rise, Hold Up Time	100mS, 20mS at Full Load (Typical)
Hi-pot Isolation	I/P-O/P, I/P-FG: 1.5KVAC, O/P-FG: 0.5KVAC
Operating Temperature Range	0°C to +50°C@100%, -10°C@80%, +60°C@60% Load
Storage Temperature Range	-40°C to +85°C, 0 to 95%RH (Non-Condensing)
Safety Standards	Design Refer To UL1012
EMC standards	Design Refer To FCC Part 15 J
Cooling Method	Free Air Cooling Convection
Weight	0.54Kgs/pcsz

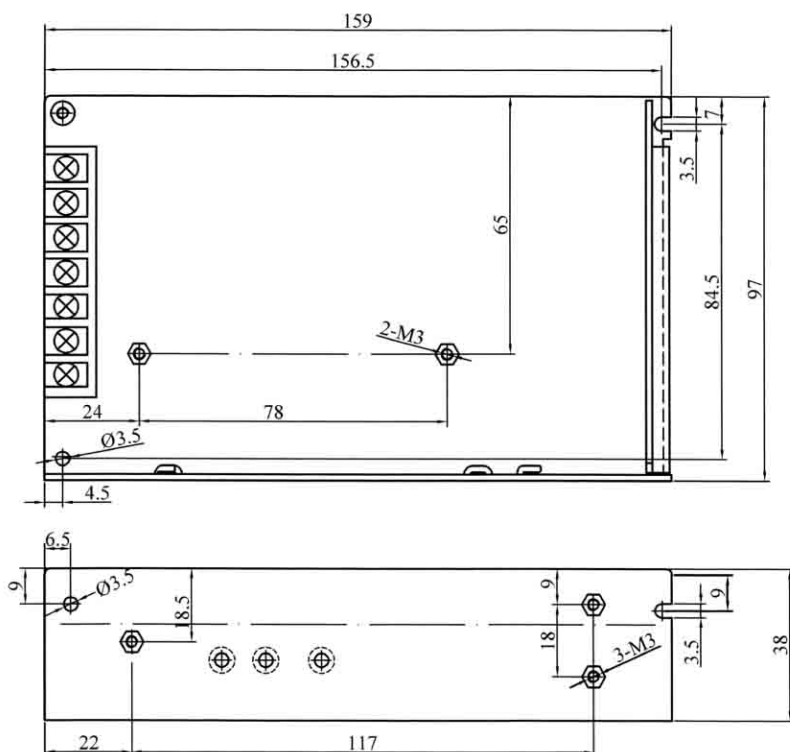
Product model	DC output	Load regul.	R&N	Efficiency	Max Output
HTT-50-A	5V, 0.6~7A	1%	50mV	67%	52W
	12V, 0.2~1A	5%	100mV		
	-5V, 0.2~1A	5%	100mV		
HTT-50-B	5V, 0.6~5A	1%	50mV	70%	49W
	12V, 0.2~1A	5%	100mV		
	-12V, 0.2~1A	5%	100mV		
HTT-50-C	5V, 0.6~4A	1%	50mV	72%	50W
	15V, 0.2~1A	5%	100mV		
	-15V, 0.2~1A	5%	100mV		
HTT-50-D	5V, 0.6~4A	1%	50mV	73%	51W
	12V, 0.2~1.2A	6%	100mV		
	24V, 0.2~1.2A	6%	100mV		

### notes:

1. All dimensions in mm.

2. Tolerance (except cable length): xx = ±0.04

xxx = ±0.010





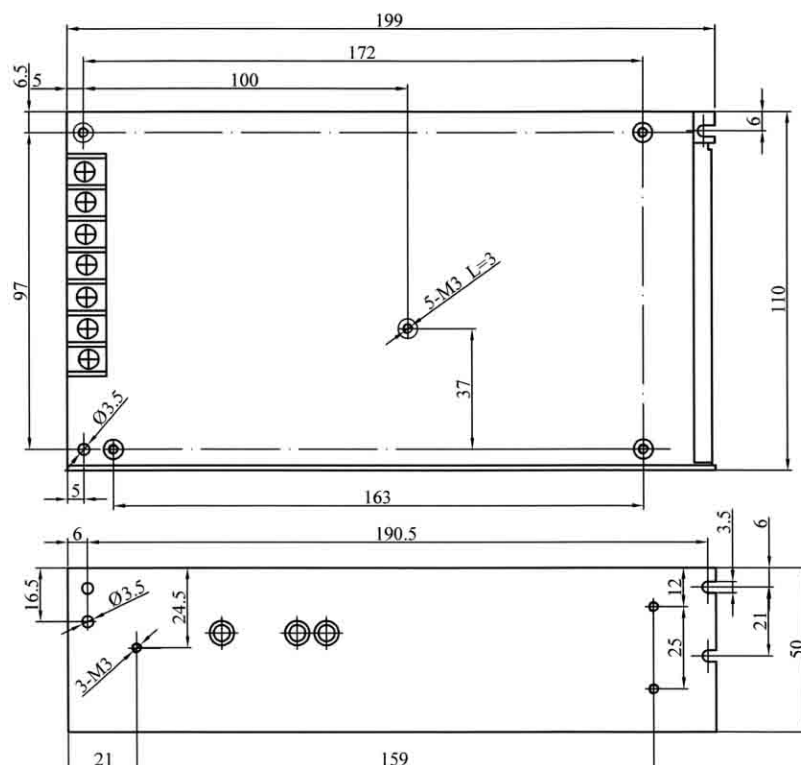
## 120W Triple Output Switching Power Supply

- AC Input Range Selectable By Switch
- Low Cost, High Reliability
- Low Power Consumption
- Built-In EMI Filter
- Protections: Over Load/ Short Circuit
- 100% Full Load High Temperature Burn-in Test
- 1 Years Warranty



Input Voltage Range	88~132VAC/ 176~264VAC Selectable By Switch
Input Frequency	47-63Hz
Inrush Current	Cold Start, 30A/ 115VAC, 50A/ 230VAC
Output Adjustment Range	CH1: -5%~+10% Rated Output Voltage
Line Regulation	≤0.5%
Output Over Load Protection	105%~135% Shut Off, AC recycle To Re-Start
Output Short Circuit Protection	Shut Off, AC recycle To Re-Start
Rise, Hold Up Time	50mS, 20mS at Full Load (Typical)
Hi-pot Isolation	I/P-O/P, I/P-FG: 1.5KVAC, O/P-FG: 0.5KVAC
Operating Temperature Range	0℃ to +50℃@100%, -10℃@80%, +60℃@60% Load
Storage Temperature Range	-40℃ to +85℃, 0 to 95%RH (Non-Condensing)
Safety Standards	Design Refer To UL1012
EMC standards	Design Refer To FCC Part 15 J
Cooling Method	Free Air Cooling Convection
Weight	0.82Kgs/pcs

Product model	DC output	Load regul.	R&N	Efficiency	Max Output
HTT-120-A	5V, 2~12A	1%	100mV	76%	120W
	12V, 0.5~5A	6%	120mV		
	-5V, 0.2~1A	6%	100mV		
HTT-120-B	5V, 2~12A	1%	100mV	76%	121W
	12V, 0.5~5A	6%	120mV		
	-12V, 0.2~1A	6%	120mV		
HTT-120-C	5V, 2~12A	1%	100mV	75%	118W
	15V, 0.5~5A	+10%, -5%	120mV		
	-15V, 0.2~1A	+10%, -5%	120mV		
HTT-120-D	5V, 2~12A	1%	100mV	79%	118W
	12V, 0.2~5A	6%	120mV		
	24V, 0.2~2A	6%	200mV		



### notes:

1. All dimensions in mm.

2. Tolerance (except cable length): xx = ±0.04

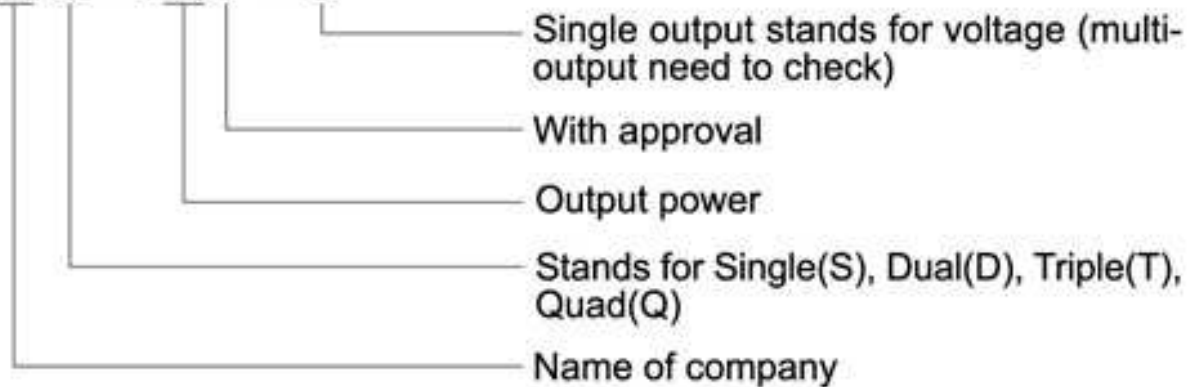
xxx = ±0.010

## Nomenclatura para pedidos:

### Model Configuration

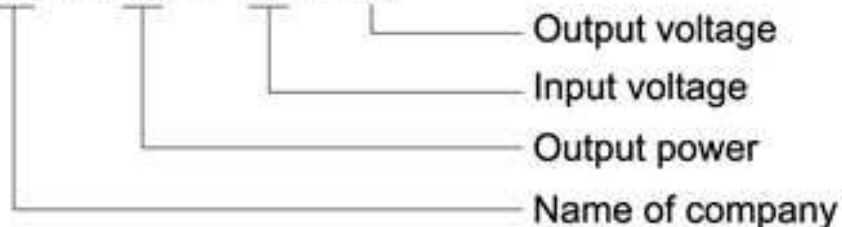
AC-DC Single output

**HTS - 25F - 5**



DC-DC Single output

**HT - 25 - 12 - 5**



Open frame power supply

**OFS - 25 - 5**



## 50W Quad Output Switching Power Supply

- AC Input Range Selectable By Switch
- Low Cost, High Reliability
- Low Power Consumption
- Built-In EMI Filter
- Protections: Over Load/ Short Circuit
- 100% Full Load High Temperature Burn-in Test
- 1 Years Warranty



Input Voltage Range	85~132VAC/ 170~264VAC Selectable By Switch
Input Frequency	47-63Hz
Inrush Current	Cold Start, 18A/ 115VAC, 36A/ 230VAC
Output Adjustment Range	CH1: -5%~+10% Rated Output Voltage
Line Regulation	≤0.5%
Output Over Load Protection	105%~150% Fold Back Current Limiting, Auto-recovery
Output Short Circuit Protection	Fold Back Current Limiting, Auto-recovery
Rise, Hold Up Time	100mS, 20mS at Full Load (Typical)
Hi-pot Isolation	I/P-O/P, I/P-FG: 1.5KVAC, O/P-FG: 0.5KVAC
Operating Temperature Range	0°C to +50°C@100%, -10°C@80%, +60°C@60% Load
Storage Temperature Range	-40°C to +85°C, 0 to 95%RH (Non-Condensing)
Safety Standards	Design Refer To UL1012
EMC standards	Design Refer To FCC Part 15 J
Cooling Method	Free Air Cooling Convection
Weight	0.56Kgs/pcs

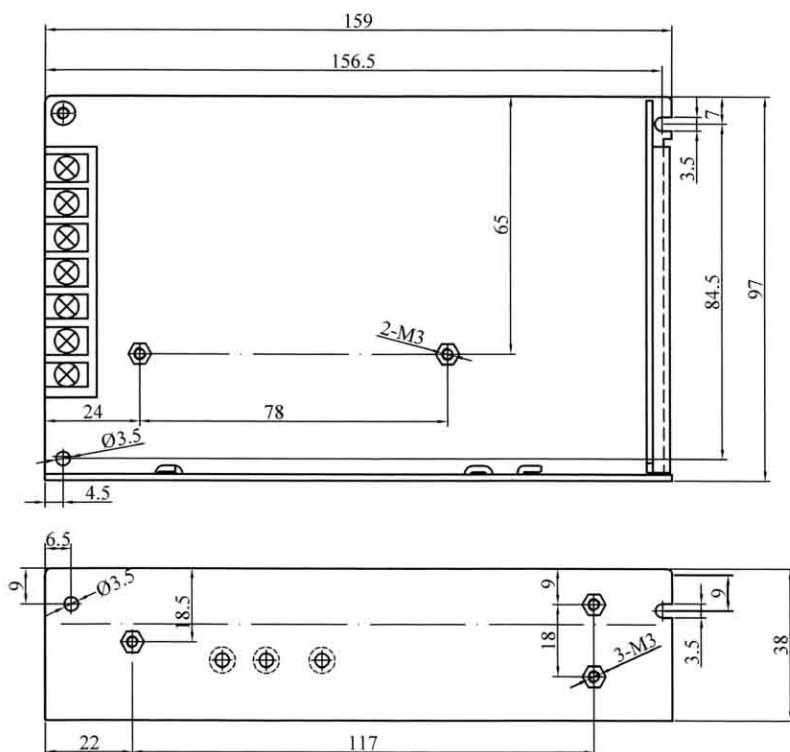
Product model	DC output	Load regul.	R&N	Efficiency	Max Output
HTQ-50-A	5V, 0.5~6A	1%	75mV	70%	50W
	12V, 0.1~2A	6%	120mV		
	-5V, 0~1A	5%	100mV		
	-12V, 0~1A	5%	120mV		
HTQ-50-B	5V, 0.5~6A	1%	75mV	71%	50W
	15V, 0.1~2A	+8%, -4%	120mV		
	-5V, 0~1A	5%	100mV		
	-15V, 0~1A	5%	120mV		
HTQ-50-C	5V, 0.5~6A	1%	75mV	74%	52W
	12V, 0.1~2A	6%	120mV		
	24V, 0.1~1A	+8%, -4%	150mV		
	-12V, 0~1A	5%	120mV		

### notes:

1. All dimensions in mm.

2. Tolerance (except cable length): xx = ±0.04

xxx = ±0.010





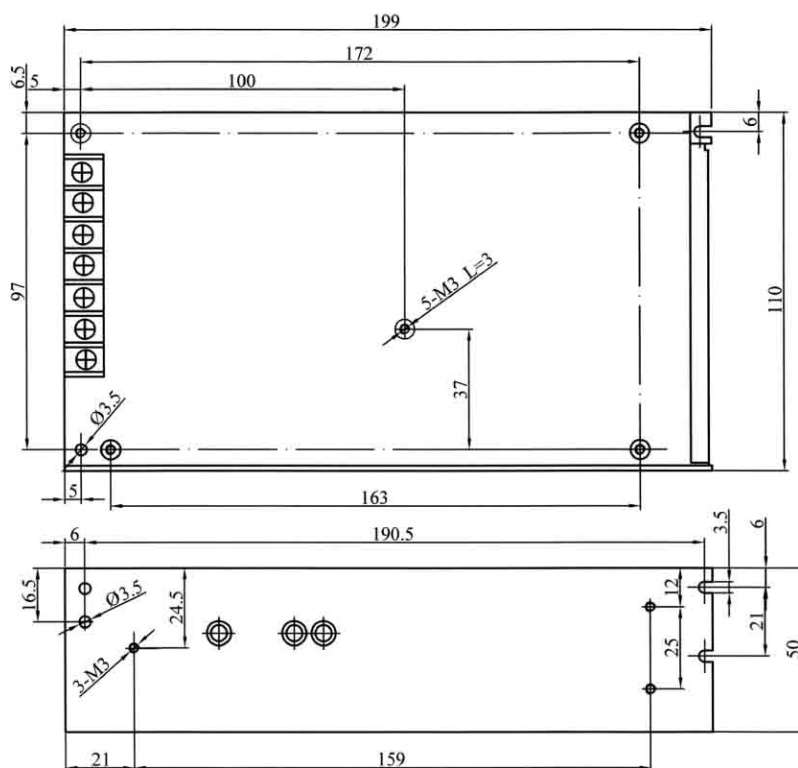
## 120W Quad Output Switching Power Supply

- AC Input Range Selectable By Switch
- Low Cost, High Reliability
- Low Power Consumption
- Built-In EMI Filter
- Protections: Over Load/ Short Circuit
- 100% Full Load High Temperature Burn-in Test
- 1 Years Warranty



Input Voltage Range	88~132VAC/ 176~264VAC Selectable By Switch
Input Frequency	47-63Hz
Inrush Current	Cold Start, 30A/ 115VAC, 50A/ 230VAC
Output Adjustment Range	CH1: -5%~+10% Rated Output Voltage
Line Regulation	≤0.5%
Output Over Load Protection	105%~135% Shut Off, AC recycle To Re-Start
Output Short Circuit Protection	Shut Off, AC recycle To Re-Start
Rise, Hold Up Time	50mS, 20mS at Full Load (Typical)
Hi-pot Isolation	I/P-O/P, I/P-FG: 1.5KVAC, O/P-FG: 0.5KVAC
Operating Temperature Range	0℃ to +50℃@100%, -10℃@80%, +60℃@60% Load
Storage Temperature Range	-40℃ to +85℃, 0 to 95%RH (Non-Condensing)
Safety Standards	SaDesign Refer To UL1012
EMC standards	Design Refer To FCC Part 15 J
Cooling Method	Free Air Cooling Convection
Weight	0.85Kgs/pcs

Product model	DC output	Load regul.	R&N	Efficiency	Max Output
HTQ-120-B	5V, 2~12A	1%	100mV	76%	120W
	12V, 0.5~5A	6%	120mV		
	-5V, 0.2~1A	6%	100mV		
	-12V, 0.2~1A	6%	120mV		
HTQ-120-C	5V, 2~12A	1%	100mV	75%	123W
	15V, 0.5~5A	6%	120mV		
	-5V, 0.2~1A	6%	100mV		
	-15V, 0.2~1A	+10%, -5%	120mV		
HTQ-120-D	5V, 2~12A	1%	100mV	79%	124W
	12V, 0.2~5A	6%	120mV		
	24V, 0.2~2A	6%	200mV		
	-12V, 0.2~1A	6%	120mV		



### notes:

1. All dimensions in mm.

2. Tolerance (except cable length): xx = ±0.04

xxx = ±0.010